

PRODUCT INFORMATION PACKET

Model No: 056H17F2022

Catalog No: Y378

microMAX™ Inverter Duty Speed Ratio Motor, 1 HP, 3 Ph, 60 Hz, 230/460 V, 1800 RPM, 56C Frame, TEFC



Regal and Marathon are trademarks of Regal Rexnord Corporation or one of its affiliated companies.

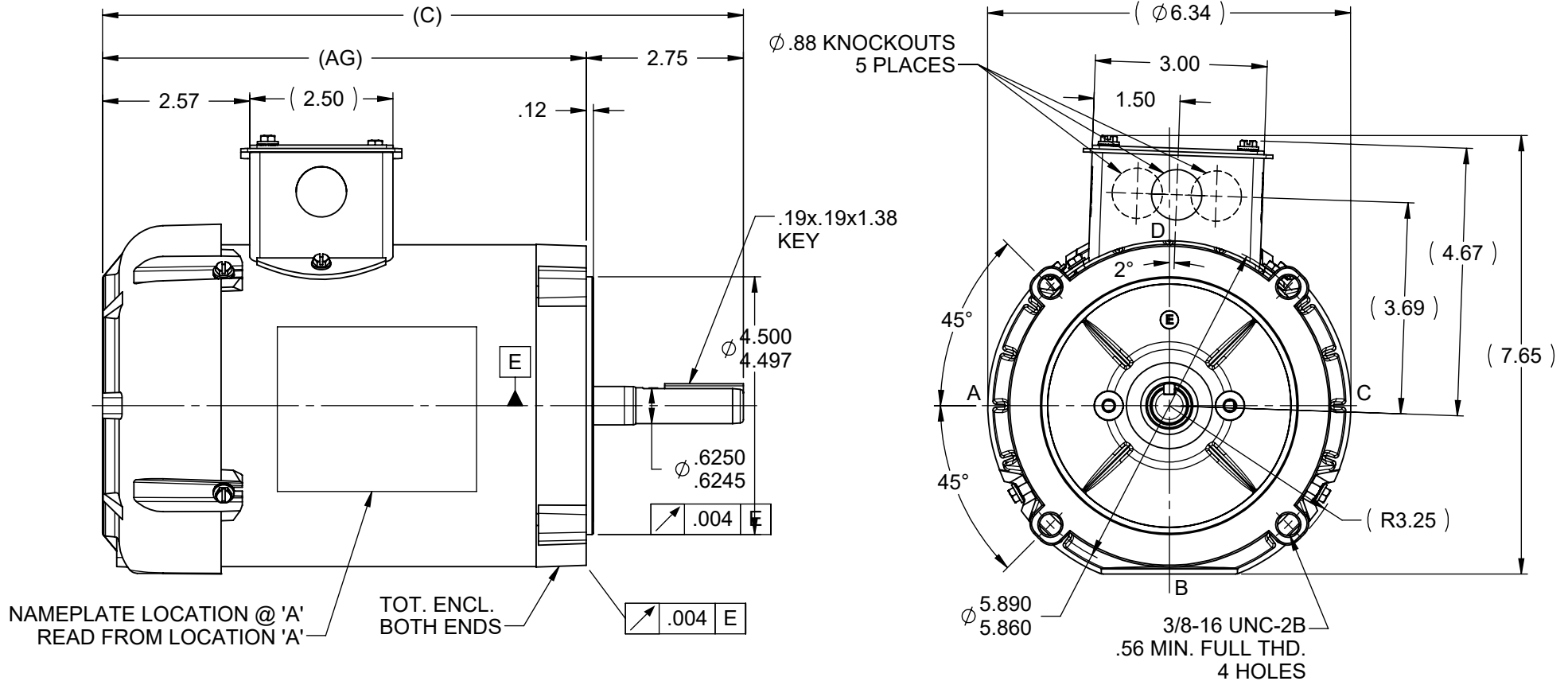
©2025 Regal Rexnord Corporation, All Rights Reserved. MC017097E

Nameplate Specifications

Phase	3	Output HP	1 Hp
Output KW	0.75 kW	Voltage	230/460 V
Speed	1725 rpm	Service Factor	1.0
Frame	56C	Enclosure	Totally Enclosed Fan Cooled
Thermal Protection	No Protection	Efficiency	78.5 %
Ambient Temperature	40 °C	Frequency	60 Hz
Current	3.2/1.6 A	Power Factor	77.5
Duty	Continuous	Insulation Class	H
Design Code	INV	KVA Code	K
Drive End Bearing Size	6203	Opp Drive End Bearing Size	6203
UL	Recognized	CSA	Y
CE	Y	IP Code	43
Number of Speeds	1		

Technical Specifications

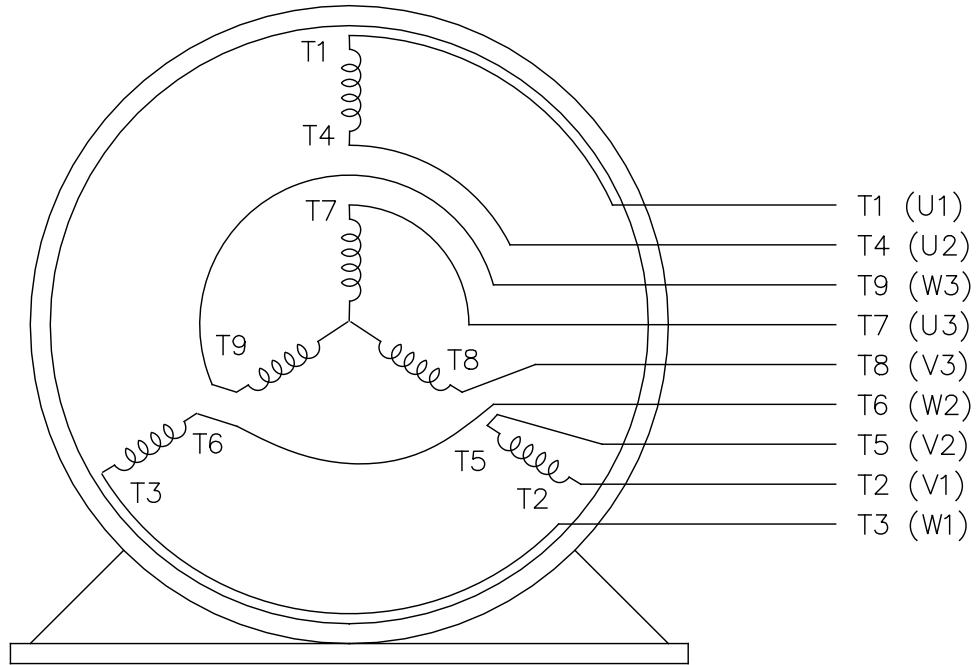
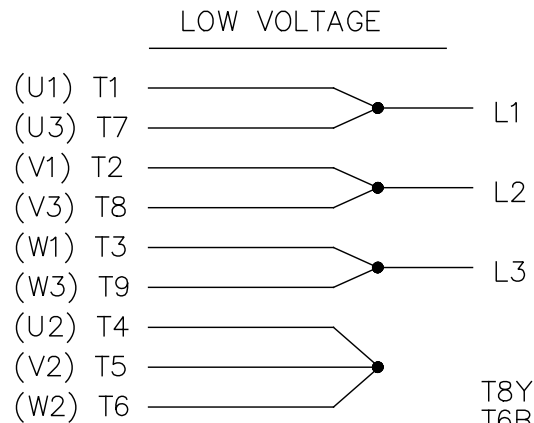
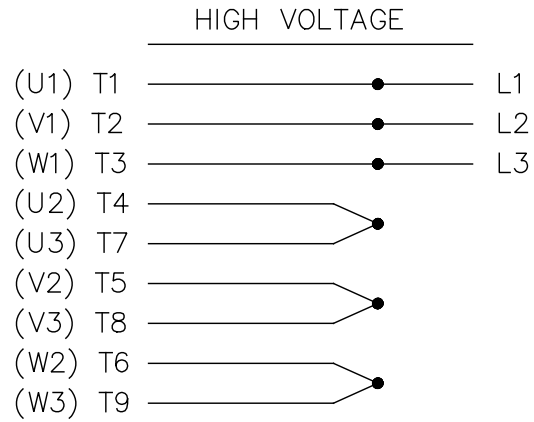
Electrical Type	Squirrel Cage Inverter Duty	Starting Method	Inverter Only
Poles	4	Rotation	Reversible
Resistance Main	16.6 Ohms	Mounting	Round
Motor Orientation	Horizontal	Drive End Bearing	Ball
Opp Drive End Bearing	Ball	Frame Material	Rolled Steel
Shaft Type	NEMA 56	Overall Length	12.44 in
Frame Length	7.50 in	Shaft Diameter	0.625 in
Shaft Extension	2.06 in	Assembly/Box Mounting	F3
Inverter Load	CONSTANT 20:1		
Connection Drawing	A-EE7308	Outline Drawing	A-SS403148-750



DASH	C	AG
500	9.94	7.88
525	10.19	8.13
575	10.69	8.63
625	11.19	9.13
750	12.44	10.38

				TOLERANCES UNLESS SPECIFIED		Regal Rexnord	Regal Beloit America, Inc.		DRAWN	
				DEC	INCHES		CHK	ML	DRS 05-21-2001	
				.X	±.1			APPR	TOM 05-25-2001	
3	CHG FROM MARATHON TO RRX LOGO	KVDG 13-06-2024	DS	.XX	±.03	TITLE	OUTLINE	SCALE	3:8	
2	REDRAWN ON SOLIDWORKS	DRS 05-17-2005	ML	.XXX	±.005			REF		
1	NEW DRAWING	DRS 05-25-2001		.XXX	±.0005	MAT'L		FMF		
NO	REVISION	BY & DATE	CHK	ANG	±7'30"	FINISH		PREV		
THIS DRAWING IN DESIGN AND DETAIL IS OUR PROPERTY AND MUST NOT BE USED EXCEPT IN CONNECTION WITH OUR WORK. ALL RIGHTS OF DESIGN AND INVENTION ARE RESERVED. THIS IS AN ELECTRONICALLY GENERATED DOCUMENT - DO NOT SCALE THIS PRINT				RFP		CAD FILE	SS403148	SIZE	DRAWING NO	REV
				DIST	WP			A	SS403148	3

THREE PHASE
DUAL VOLTAGE MOTOR



VIEW OF TERMINAL END

REF.
WINDING DIAGRAM

T8Y, T2Y, T2BL, T4BX, T2EC, T2G
T6BZ, T2B, T6BL, T4AV, T6B, T4B

OPTIONAL CORD
CONNECTION

L1 WHITE
L2 RED
L3 BLACK

DRAWING REVISION	REVISION BY	DATE	TOLERANCES UNLESS OTHERWISE SPECIFIED	DRAWN BY:	Trans-Power
ECO	APPROVED BY	DATE	DEC. mm INCH ANGLE .X ±2.5 [±0.1] ±0.5° .XX ±0.51 [±0.02] .XXX ±0.127 [±0.005] .XXXX ±0.0127 [±0.0005]	AS DATE: 02/20/2017	
ECO DESCRIPTION NEW DRAWING			REMOVE BURRS & BREAK SHARP EDGES .08/.38 [0.03/.015] X 45° CORNER FILLETS R.51 [0.2]	APPROVED BY:	DESCRIPTION
COPYRIGHT KAMAN INDUSTRIAL TECHNOLOGIES INC. VENDOR IDENTIFICATION TNP ALL RIGHTS RESERVED. PROPRIETARY AND CONFIDENTIAL INFORMATION - THIS DOCUMENT IS THE PROPERTY OF VENDOR IDENTIFICATION TNP ("OWNER") AND CONTAINS OWNER'S PROPRIETARY INFORMATION. ANY PERSON, CORPORATION OR OTHER FIRM RECEIVING IT IS DEEMED, BY RECEIVING IT, TO AGREE THAT IT, AND/OR ANY PART OF IT, SHALL NOT BE DISCLOSED TO ANY PERSON, CORPORATION OR OTHER ENTITY, DUPLICATED, AND/OR USED, EXCEPT AS EXPRESSLY APPROVED IN WRITING IN ADVANCE BY OWNER. THIS DOCUMENT SHALL BE RETURNED TO OWNER UPON REQUEST. IT MAY BE SUBJECT TO CERTAIN RESTRICTIONS UNDER APPLICABLE EXPORT CONTROL LAWS AND REGULATIONS.			MACHINED SURFACES INCH $\sqrt[125]{}$ mm $\sqrt[3.2]{}$	ST DATE: 02/20/2017	3 PHASE - DUAL VOLTAGE
			INCH SHOWN IN [BRACKETS]	REFERENCE EE7308	MATERIAL
				THIRD ANGLE PROJECTION	PROCESS/FINISH
				SIZE DWG NO A	EE7308TP
					SHEET 1

CERTIFICATION DATA SHEET

Model#: 56H17F2022 A WINDING#: TE48421 R1 3
 CONN. DIAGRAM: A-EE7308 ASSEMBLY: F3
 OUTLINE: A-SS403148-750

TYPICAL MOTOR PERFORMANCE DATA

HP	KW	SYNC. RPM	F.L. RPM	FRAME	ENCLOSURE	KVA CODE	DESIGN
1	.75	1800	1725	56C	TEFC	K	INV

PH	Hz	VOLTS	FL AMPS	START TYPE	DUTY	INSL	S.F	AMB°C	ELEVATION
3	60	230/460	3.2/1.6	INVERTER ONLY	CONTINUOUS	H1	1.0	40	3300

FULL LOAD EFF: 78.5	3/4 LOAD EFF: 76.5	1/2 LOAD EFF: 72.5	GTD. EFF	ELEC. TYPE	NO LOAD AMPS
FULL LOAD PF: 77.5	3/4 LOAD PF: 71	1/2 LOAD PF: 60	75.5	SQ CAGE INV DUTY	1.8 / .9

F.L. TORQUE	LOCKED ROTOR AMPS	L.R. TORQUE	B.D. TORQUE	F.L. RISE°C
3 LB-FT	23 / 11.5	12.5 LB-FT 417	12 LB-FT 400	65

SOUND PRESSURE @ 3 FT.	SOUND POWER	ROTOR WK^2	MAX. WK^2	SAFE STALL TIME	STARTS / HOUR	APPROX. MOTOR WGT
60 dBA	70 dBA	0.09 LB-FT^2	0 LB-FT^2	0 SEC.	0	- LBS.

EQUIVALENT WYE CKT.PARAMETERS (OHMS PER PHASE)

R1	R2	X1	X2	XM
10.8204	10.934	12.354	7.4692	292.52

RM	ZREF	XR	TD	TD0
9514	284	1.43	0.0036	0.073

***** SUPPLEMENTAL INFORMATION *****

DE BRACKET TYPE	ODE BRACKET TYPE	MOUNT TYPE	ORIENTATION	SEVERE DUTY	HAZARDOUS LOCATION	DRIP COVER	SCREENS	PAINT
C-FACE	STANDARD	ROUND	HORIZONTAL	FALSE	NONE	FALSE	NONE	BLACK (POWDER)

BEARINGS		GREASE	SHAFT TYPE	SPECIAL DE	SPECIAL ODE	SHAFT MATERIAL	FRAME MATERIAL
DE	OPE						
BALL	BALL	POLYREX EM	STANDARD 56	NONE	NONE	1144 STRESSPROOF (C-223)	ROLLED STEEL
6203	6203						

THERMO-PROTECTORS				THERMISTORS	CONTROL	SPACE /n HEATERS
THERMOSTATS	PROTECTORS	WDG RTDs	BRG RTDs			
NONE	NOT	NONE	NONE	NONE	FALSE	NONE VOLTS

If Inverter equals NONE, contact factory for further information

INVERTER TORQUE: CONSTANT 20:1 INV. HP SPEED RANGE: 2.0 X BASE SPEED
ENCODER: NONE NONE NONE NONE NONE PPR
BRAKE: NONE NONE

*
N
O
T
E
S
*

NONE	P/N	NONE	
NONE	NONE		
NONE FT-LB		NONE V	NONE Hz

DATE: 06/28/2017 01:06:29 AM
FORM 3531 REV.3 02/07/99
** Subject to change without notice.



MARATHON ELECTRIC CORPORATION
TYPICAL PERFORMANCE CURVE for AC MOTOR

Customer

Curve at

460

Volts

HP 1.00

PHASE 3

Model No 56H17F2022

60

HZ

VOLTS 230/460

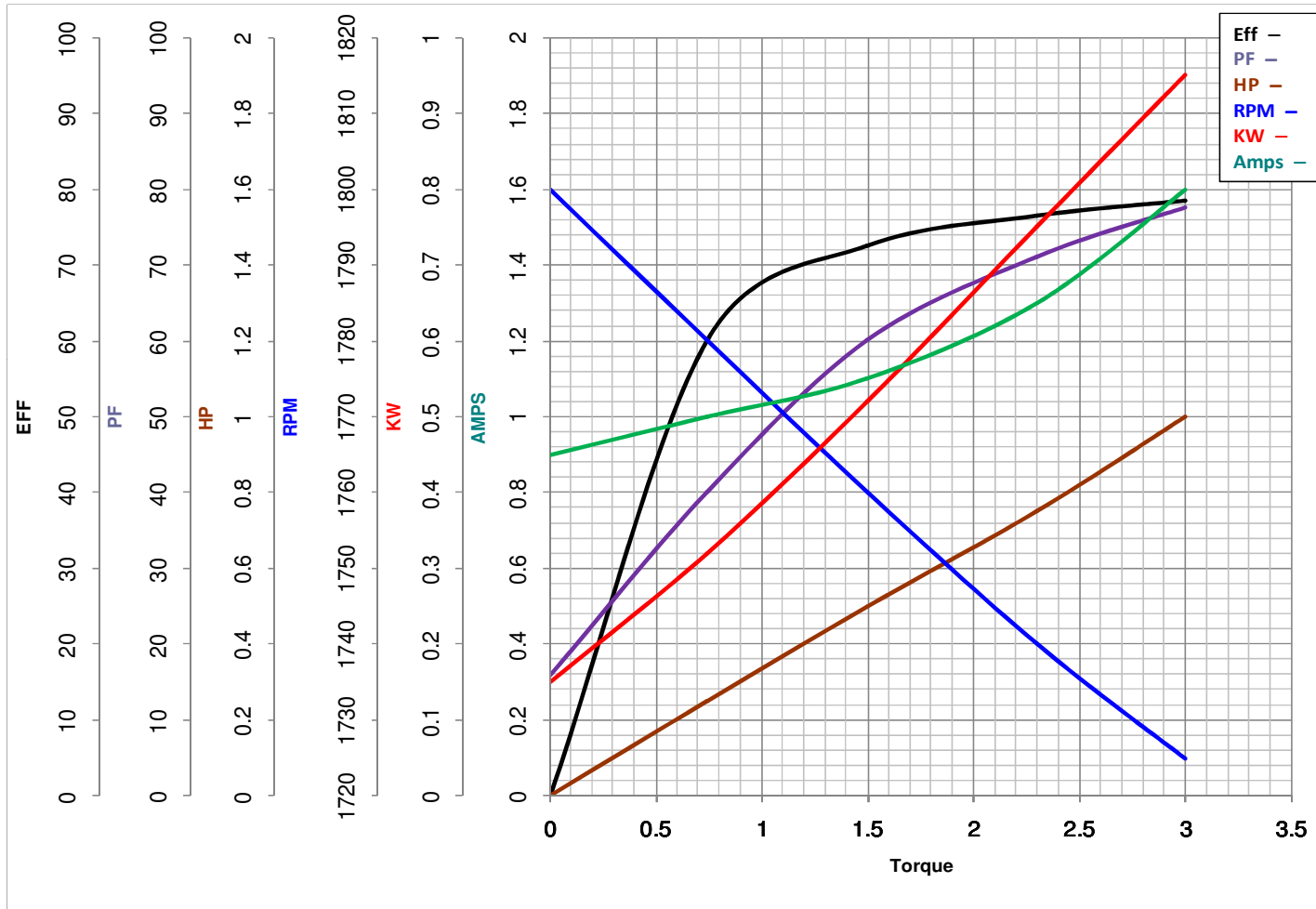
Catalog No Y378

1

HP

HZ 60

RPM 1725



Torque in Lb.Ft

FL TORQUE 3 Lb.Ft
 BD TORQUE 12.0 Lb.Ft
 LR TORQUE 12.5 Lb.Ft

FL AMPS 3.2/1.6
 PU TORQUE 11.3 Lb.Ft
 LR AMPS 11.5

WINDING TE48421-3

Date 1/24/2019

EC Declaration of Conformity

The undersigned representing
the manufacturer:

Regal Beloit America
100 East Randolph St.
Wausau, WI 54401

and the authorized representative
established within the Community:

Marathon Electric UK
6F Thistleton Road Ind. Estate
Market Overton
Oakham, Rutland LE15 7PP UK

are committed to providing customers with products that comply with applicable regulations and international protocols to which they are subject, including the requirements of the European Parliament Directive on the Harmonization of the laws relating to electrical equipment designed for use within certain voltage limits (2014/35/EU).

Regal Beloit America declares that the following product(s), to which this declaration relates, are in conformity with the relevant sections of the EC standards listed below.

This statement supersedes any statements previously issued pertaining to the product(s) listed below and is subject to change without notice.

Model No : 056H17F2022

(Model No. may contain prefix and/or suffix characters)

Catalog No : Y378

Rework No : N/A

Directives :

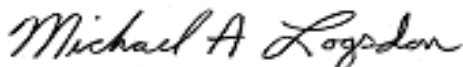
Low Voltage Directive 2014/35/EU

Harmonized Standards Used :

EN 60034-1: 2010 (IEC 60034-1: 2010)

EN 60034-5: 2001/A1:2007 (IEC 60034-5: 2000/A1:2006)

Authorized Representative:



Michael A. Logsdon
Vice President, Technology

Authorized Representative in the Community:



Julian Clark
Marketing Engineer

Created on 09/01/2022

CE 22